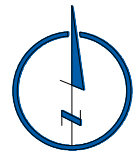
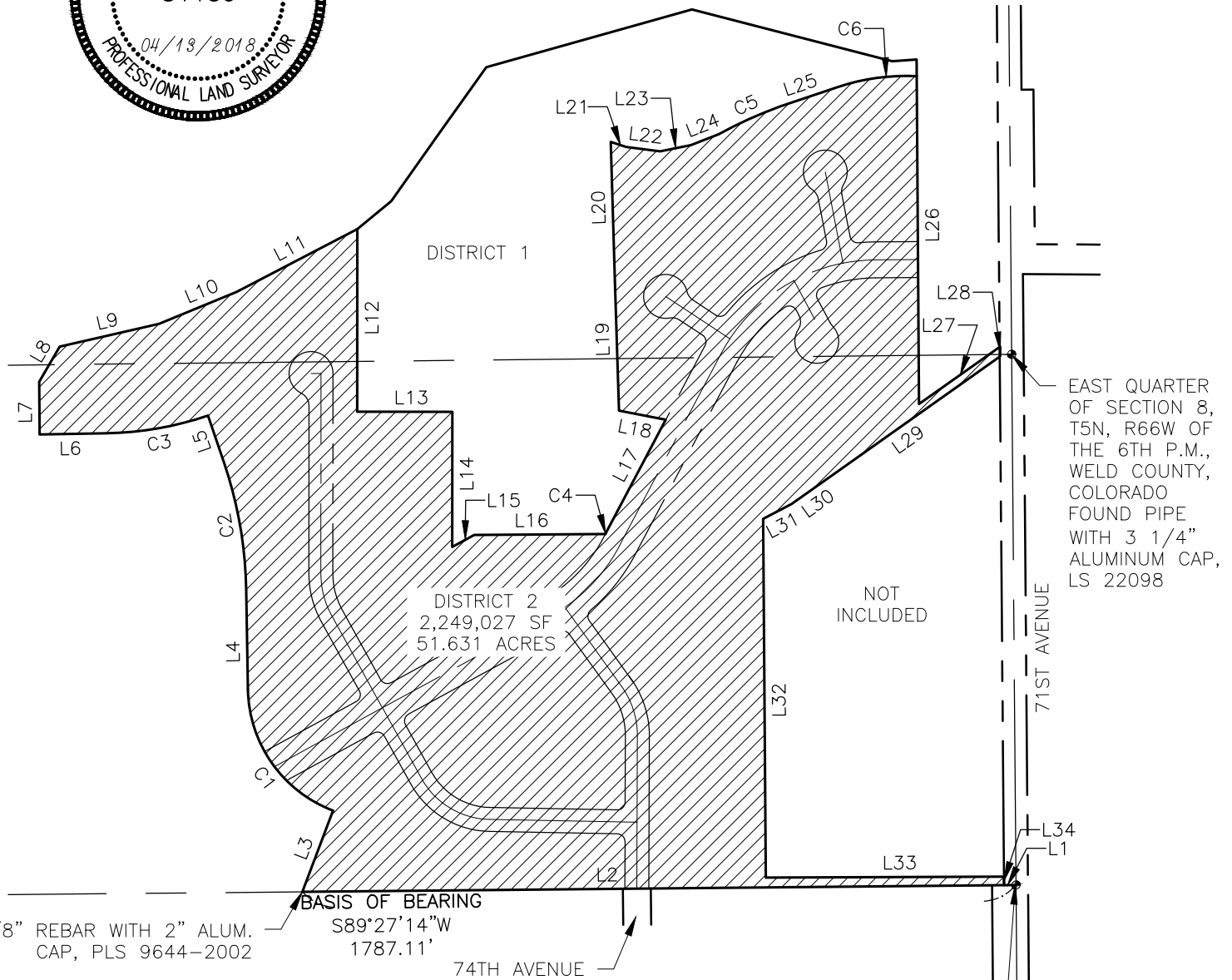


DISTRICT 2
EXHIBIT



0 400
SCALE: 1" = 400'
U.S. SURVEY FEET



EAST QUARTER OF SECTION 8, T5N, R66W OF THE 6TH P.M., WELD COUNTY, COLORADO FOUND PIPE WITH 3 1/4" ALUMINUM CAP, LS 22098

NOT INCLUDED

DISTRICT 2
2,249,027 SF
51.631 ACRES

BASIS OF BEARING
S89°27'14"W
1787.11'

5/8" REBAR WITH 2" ALUM. CAP, PLS 9644-2002

SOUTHEAST CORNER OF THE NORTH HALF OF THE SOUTHEAST QUARTER OF SECTION 8, T5N, R66W OF THE 6TH P.M., WELD COUNTY, COLORADO. FOUND 5/8" REBAR WITH 2" ALUMINUM CAP, PLS 38199

TRIPLE CREEK METROPOLITAN DISTRICT



LAMP RYNEARSON
& ASSOCIATES

4715 Innovation Drive 970.226.0342 | P
Fort Collins, CO 80525 970.226.0879 | F
www.LRA-inc.com

DRAWN BY	DESIGNED BY	REVIEWED BY	PROJECT - TASK NUMBER	DATE	BOOK AND PAGE	REVISIONS
JAC	TDS	LAL	0218039	06/27/2018		