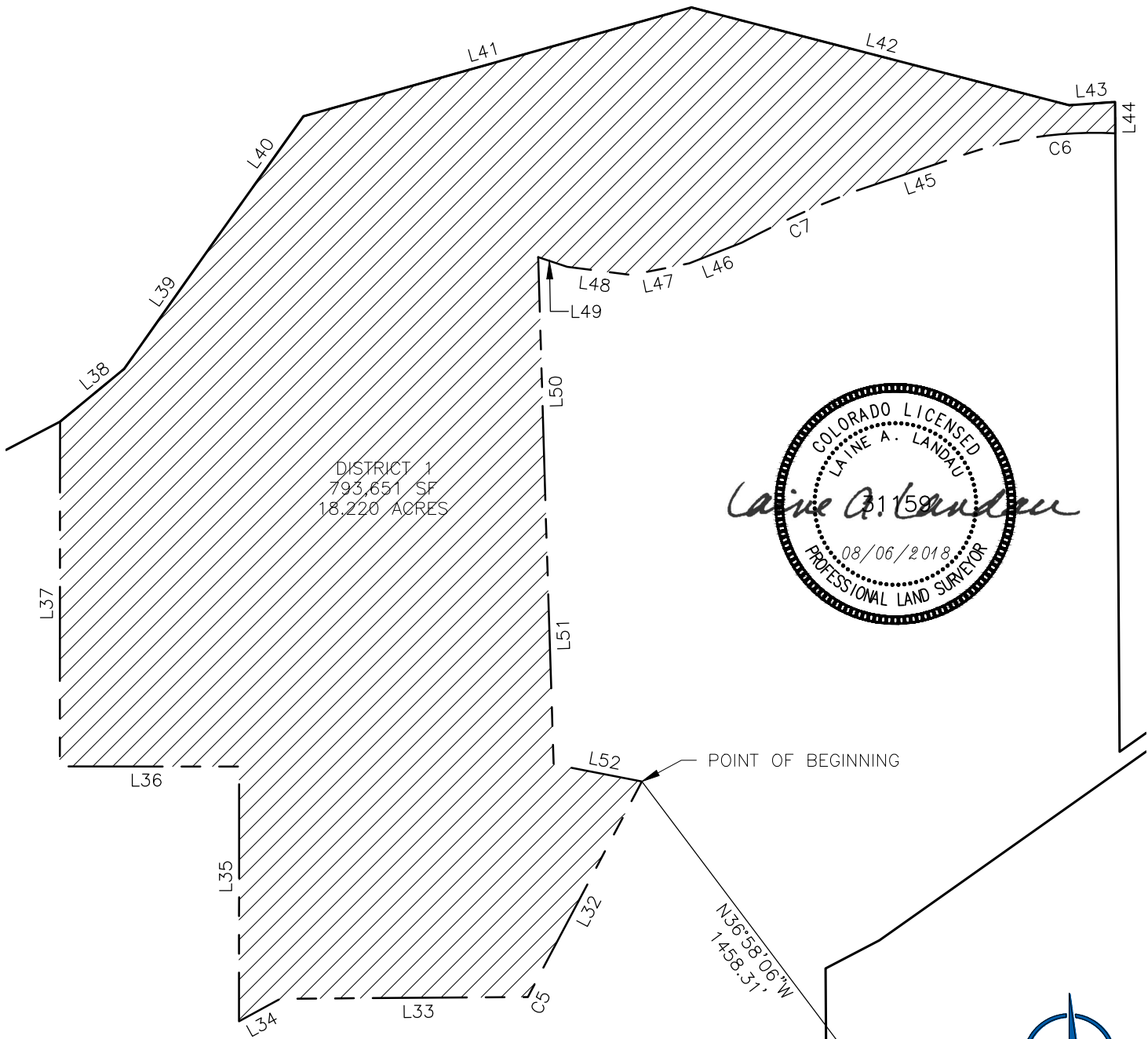


DISTRICT 1
EXHIBIT

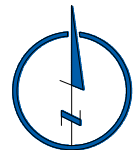


DISTRICT 1
793,651 SF
18,220 ACRES



BASIS OF BEARING
S89°27'14\"W
1787.11'
5/8\" REBAR WITH 2\" ALUM.
CAP, PLS 9644-2002

SOUTHEAST CORNER OF THE NORTH HALF
OF THE SOUTHEAST QUARTER OF SECTION
8, T5N, R66W OF THE 6TH P.M., WELD
COUNTY, COLORADO.
FOUND 5/8\" REBAR WITH 2\" ALUMINUM
CAP, LS 38199



0 200
SCALE: 1\" = 200'
U.S. SURVEY FEET

TRIPLE CREEK METROPOLITAN DISTRICT

SHEET 2 OF 3



LAMP RYNEARSON
& ASSOCIATES

4715 Innovation Drive 970.226.0342 | P
Fort Collins, CO 80525 970.226.0879 | F
www.LRA-inc.com

DRAWN BY	DESIGNED BY	REVIEWED BY	PROJECT - TASK NUMBER	DATE	BOOK AND PAGE	REVISIONS
JAC	TDS	LAL	0218039	08/06/2018		

PATH\FILENAME L:\Engineering\0218039 Richmark General Consultation\DRAWINGS\BASE MODELS\Triple Creek Metro District\0218039-EXHIBITS.dwg